



Message from the Executive Headteacher - Lindsay Regan

As we reach the end of a very busy and successful term at Arbour Academy, I would like to thank our learners, families and staff for their continued dedication, flexibility and support. I have been particularly impressed by how well our learners have transitioned from Key Stage 3 into Key Stage 4. They have embraced the increased independence brilliantly and have thoroughly enjoyed the rich cultural capital opportunities through Outdoor Education, including confidently using public transport and navigating their way around Salford. These experiences are invaluable in building life skills, confidence and aspiration.

I would also like to extend my sincere thanks to Jo McQueen for stepping into the role of Acting Headteacher at Arbour to allow Gwyn Owen to support our new free school, Acer Academy, until Easter. A huge thank you also goes to Sophie Booth, who is currently supporting at Acer until February, before returning to Arbour. Your flexibility and commitment to our wider trust is truly appreciated.

The fantastic work on curriculum development continues at pace, and I am excited by the innovative plans being developed for project-based learning in the new year, which will further enrich our learners' experience.

We have also formally welcomed Acer Academy into our SEMH hub this term, and it has been a pleasure to see our three schools working so closely together. The collaboration across SEND and SEMH is growing in strength, and it is wonderful to see such a wide range of expertise being shared for the benefit of all our learners.

As we reflect on a successful term, I would like to thank everyone at Arbour for their hard work, positivity and commitment. I wish you all a relaxing, joyful and restful Christmas break.



Parent Governor Recruitment

What are we looking for?

Our school Governing Body is made up of Governors from all walks of life and many come to us through a variety of routes and with a range of different backgrounds, skills and experiences, but they are all volunteers who work together for the benefit of the School and are the link between the School and the community it serves

We want you!

We are currently looking for new Parent Governors and would be delighted to hear from anyone who has:

- An interest in the performance of the school.
- A desire to contribute to and represent the community.
- An open and enquiring mind
- The ability to look at issues objectively
- The confidence to ask questions and join in debate.
- A willingness to listen and make informed judgements
- The ability to work well with others
- Time to spare



•A child or children currently attending the School
If you match the above description, you may be the very person to become a Governor at Arbour Academy. Everyone has something to offer and we want people from as many backgrounds and with as wide a range of interests as possible.

What can we offer?

- A chance to develop skills in strategic management
- The opportunity to work with our team of governors and staff in improving our School

- A sense of achievement in making a difference to our School
- The pleasure of helping students reach their potential

What is the Governing Body's Role?

The Governing Body of our school plays a key role in:

- Setting targets for raising standards of educational achievement.
- Monitoring progress towards meeting these targets.
- Supporting and challenging the performance of the Headteacher
- Deciding policy and future development plans

As well as attending meetings, governors are also asked to look at specific areas of the school's work in more detail. To help support governors, everyone has access to further training to help build on existing skills or to develop new ones.

If you are interested, please complete an application form and return it to the school either in person or by email.

Email: cheavey@arbouracademy.uk

Application forms can be found on our website www.arbouracademy.uk.

scan the QR code or collect from the school office.



Message from the Acting Head of School - Joanne McQueen

As we come to the end of a busy and successful Autumn Term at Arbour Academy, I would like to take this opportunity to reflect on the many positive moments we have shared together. It has been a term filled with hard work, growth and great achievements across the school.

Our pupils have shown impressive dedication to their learning, embracing new challenges and making strong progress. Whether through classroom learning, enrichment activities or wider school events, they have approached the term with enthusiasm and resilience. We are incredibly proud of each and every one of them.

I would also like to recognise the continued hard work, professionalism and commitment of our staff team. Their determination to provide the best possible education and support for our pupils' shines through every day. Arbour Academy is a special place because of the people within it, and I am grateful for all they do.

A huge thank you, too, to our parents and carers for your ongoing support. Your partnership with the school makes a real difference, and we truly value the trust you place in us.

As we head into the Christmas break, pupils and staff alike are ready for a well-earned rest. We hope the holiday brings time for family, celebration and relaxation. Looking ahead to the Spring Term, we remain committed to maintaining high standards and continuing to strengthen all areas of school life.

We are excited to build on this term's successes and see what the next chapter at Arbour Academy brings.

Wishing you all a peaceful Christmas and a happy New Year.

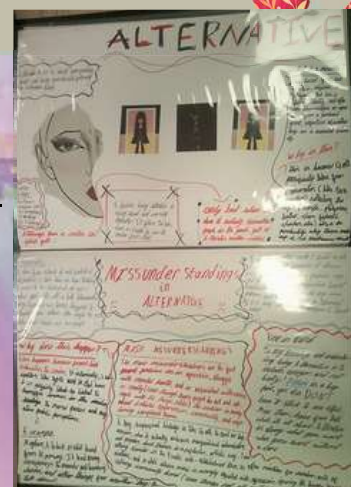
We look forward to welcoming pupils back on Tuesday 6th January 2026.



Teaching and learning

Art Projects

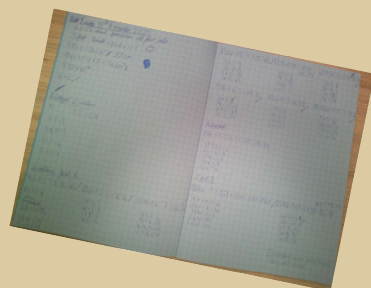
This term pupils have each now chosen their individual Trinity Arts projects, with an impressive range of creative ideas including makeup artistry, car design, architecture, Tim Burton-inspired stop-motion, Anime illustration and many more. Each student has begun developing their portfolio, documenting their ideas, experiments and reflections as they progress. They have already shown great enthusiasm by trying out new skills, exploring different creative techniques and carrying out independent research to deepen their understanding of their chosen specialism. The variety and dedication on display highlights the pupils' growing confidence as young artists.



MATHS

Pupils across Arbour Academy have made an excellent and positive start to their Maths learning this term, showing real determination and focus.

They have been working hard on key topics such as algebra, probability, shape and constructions, building confidence and strengthening their core skills. Our Year 9, 10 and 11 pupils have also begun purposeful revision activities in preparation for their upcoming qualifications, demonstrating maturity and commitment to their progress.



Peer support and peer marking have been particularly strong, with students collaborating effectively and helping one another to improve. We are also proud to celebrate 13 Mathematicians of the Week so far—an inspiring reflection of the dedication, effort and enthusiasm shown within Maths lessons.

Childcare studies

Our wonderful Year 10 pupils studying Childcare had an exciting hands-on experience as part of their CFC13 unit. They welcomed a very special guest—baby Tara—into their lesson to help them explore how to support, communicate and engage with young children.

The pupils thoughtfully selected a storybook and a nursery rhyme they felt would capture Tara's attention. To make the experience even more interactive, they prepared a range of colourful props, soft toys, and sensory items to bring their storytelling and singing to life. From bright characters to jingling accessories, every detail was chosen to help keep Tara interested and fully involved.

The classroom was filled with warm smiles as the pupils read, sang, and used their props to make the session fun and engaging. Tara was completely enthralled by the visuals, sounds, and gentle interaction from the group.



This visit gave our Year 10 pupils a fantastic opportunity to demonstrate their developing skills and gain real experience in communication, responsiveness, and early-years engagement.

Friendship festival

We were thrilled to take students from year 8 and 9 to this year's Friendship Festival, an inclusive celebration designed to bring young people together through fun, accessible activities. Our students took part in Boccia and New Age Kurling, enjoying friendly, non-competitive games against pupils from other schools.

The heart of this event is all about confidence, connection, and community — giving students who may sometimes find PE or school social situations challenging a chance to shine, try something new, and make meaningful new friendships. The students represented our school beautifully, showing fantastic teamwork, kindness, and enthusiasm throughout the day.



Maple Class have been diving deeper into their ongoing woodland learning sessions at the stunning RHS Gardens in Worsley—and their craftsmanship is truly taking shape! As part of their continuing project, the pupils have been carefully whittling hazel wood to create a special sign for the Working Wood area.

After shaping the Hazel, the class used a burning technique to darken the wood before splitting it, revealing beautifully contrasting letters formed from the whittled pieces. This traditional method has helped them produce lettering with a natural, eye-catching finish—and the pupils have been so proud of how professional their work looks!

This ongoing project continues to give the pupils a fantastic blend of practical skills, outdoor learning, and artistic expression—making every visit to RHS Worsley a brilliant adventure they can't wait to return to!



Cooking at Arbour

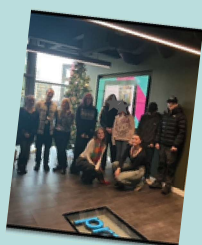
This term in cooking, Years 10 and 11 options have been working towards making their 8 dishes and annotating the processes involved. This along with food safety and hygiene will complete their Unit 1 work.

Key stage 3 learners have been developing their knowledge around health and safety in the kitchen, food poisoning and developing cutting skills. They have made a range of recipes including soup, homemade crisps and cakes. More complex recipes will be made next half term including main course meals and desserts.



Business students Trip

On 10th December, the Year 10 and Year 11 Business Qualification students visited Praetura Ventures, a financial services firm that specialises in lending and equity solutions for start-ups and small to medium-sized enterprises, ranging from venture capital to asset-based finance.



The group departed school at 10:00, travelled by tram into the city center, and made the short walk to Praetura's offices. Upon arrival, they were welcomed by Pete, the company's CEO, who provided an introductory tour of the impressive facilities. A highlight for many students was the rooftop space, where they were able to take photographs and enjoy panoramic views across Manchester. After the tour, the students were guided to a large, high-specification boardroom and seated around the main table for a series of talks.

The first speaker was a remarkable 14-year-old entrepreneur who has launched her own company producing flat-pack pet coffins. Her story offered a powerful and relatable example of how a business can begin with a simple idea and grow through determination and creativity. Students then had an opportunity to explore the wider office environment, engage with staff, and ask questions about career paths, business development, and the day-to-day operations of a financial services organisation.



They were later joined by another business owner, who delivered an insightful presentation on the journey of starting a company and the practical steps involved in getting a business off the ground. The advice shared was both relevant and highly valuable for learners considering future entrepreneurial ventures. Lunch was served back in the boardroom, where Pete generously arranged a selection of pizzas and soft drinks. Refreshed and energised—with both full stomachs and full minds—the students concluded the visit and made their way back to school by tram, ready to reflect on the inspiring experiences and lessons gained throughout the day.

Learning Beyond the Classroom at Arbour Academy

This term at Arbour Academy has been an exciting and enriching one, with pupils taking part in a wide range of orienteering and cultural capital experiences that have extended learning well beyond the classroom walls.

During Half Term 1, pupils focused on orienteering activities, visiting a variety of new locations and outdoor environments. These sessions gave learners valuable opportunities to develop practical skills such as map reading, navigation, teamwork, and problem solving. Working in unfamiliar surroundings helped pupils build resilience and confidence, particularly when orientating themselves independently and making decisions as a group.



In Half Term 2, the focus shifted to cultural capital, with pupils exploring busy public spaces and learning how to access and use the Manchester Metrolink tram system. For many learners, this was a significant step in developing independence. Pupils learned how to plan journeys, read transport maps, purchase tickets, and travel safely and responsibly on public transport. Being in busy areas helped them grow in confidence and understand how to conduct themselves positively in the wider community.

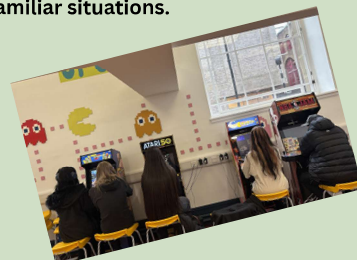
In addition, Key Stage 3 pupils took part in a fantastic wood skills course at RHS Bridgewater. This hands-on experience allowed learners to develop practical skills, follow instructions carefully, and take pride in creating and working with natural materials. The course also supported teamwork, focus, and self-confidence, while connecting pupils with nature in a calm and inspiring setting.



Staff have been incredibly proud of how well all learners have represented Arbour Academy on these trips. Pupils demonstrated excellent behaviour, teamwork, and maturity, and were a credit to the school when out in the community. They showed that they can rise to new challenges, engage positively with the public, and support one another in unfamiliar situations.



These experiences have played a vital role in supporting pupils' personal development, confidence, and independence. We are extremely proud of how hard our learners have worked and how positively they have embraced these opportunities. They continue to show that learning at Arbour Academy goes far beyond the classroom, preparing them for life skills and future success.



Rewards and incentives

Learner attendance is a priority at Arbour Academy. To recognise and reward excellent attendance, all learners with 100% attendance each week receive a certificate every Friday congratulating them on their achievement. These learners are also entered into a draw, where one lucky winner from each class is selected to receive a gift card.

We are proud to celebrate their commitment and success at Arbour Academy!





English at Arbour



Teaching and Learning Update from the English Department

KS3 English: Building Strong Foundations Through Myths and Poetry

KS3 students have enjoyed an exciting start to the year by exploring two engaging units of work, beginning with Greek Myths and Legends. This unit introduces students to some of the oldest and most influential stories in Western literature, laying important foundations for the texts they will encounter later in their school journey. The second unit, Poetry Across the Ages, has taken students on a journey from the heroic world of Beowulf to the vivid, mystical imagery of William Blake. By tracing the chronological sweep of English literature, students gain a deeper appreciation of how historical contexts shape writing and how poets are influenced by those who came before them.

KS4 English: Rising to the Challenge of GCSEs

Our Year 10 students have begun the year with impressive focus and enthusiasm as they embark on their new GCSE English studies. This term, students have focused on literature with two major areas of study. The first has been Romeo and Juliet where students demonstrated growing confidence by taking part in role plays and reading aloud.

Alongside Shakespeare, Year 10 have explored a selection of Romantic poetry, studying key works by Keats, Byron and Wordsworth. Their work has demonstrated a sophisticated understanding of the poets' use of language combined with the themes of strong emotions and relationships.

Year 11: Focused and Determined in GCSE English

Year 11 have begun their final GCSE year with a strong sense of purpose, settling quickly into the rhythm of revision and preparation. This term, students have been concentrating on Papers 1 and 2 of the English Language GCSE. They have been working hard to refine their reading and analytical skills, tackling a range of challenging fiction and non-fiction texts.

Alongside their written work, Year 11 have also been delivering their Speaking and Listening speeches. Their presentations have showcased not only their communication skills but also their growing confidence and independence as learners.

Well done to all of our learners at Arbour !

Romeo and Juliet Theatre Trip

A Captivating Modern Take on Romeo and Juliet at the Liverpool Playhouse



Our Year 10 students have studied Romeo and Juliet this term as part of their GCSE course and recently had the fantastic opportunity to attend a performance of Romeo and Juliet at the Liverpool Playhouse. This was a modern take on Shakespeare's famous tragedy, which kept pupils fully engaged from start to finish.

Teachers and pupils alike commented on how accessible the production felt. Shakespeare can sometimes seem challenging, but this modern staging made the themes of love, conflict, and fate feel immediate and relatable. Hopefully this experience will help students understand the story more deeply—and even change the way they think about Shakespeare.



Overall, the trip to the Liverpool Playhouse was an enriching and memorable experience. We look forward to more theatre visits in the future!

Our very own Ewan Martin (Outdoor Education and Careers Lead) before, during and after his big shave for Movember. This provided great entertainment for the students and his fellow colleagues.



On 11th November, the school observed a 2 minute silence to honor the armed forces members who have sacrificed their lives in the line of duty



Also in November students and staff wore odd socks as part of Anti-Bullying Week, promoting the message that it's okay to be different and standing up against bullying.



As part of this years children in need day, the staff and pupils enjoyed playing Bear Pong and taking part in a quiz, we were also very excited to be visited by the local Ice cream van for a tasty treat.



End of year reward trips



Years 8 and 9 enjoying a trip to Bounce



Year 10 visited Blue Planet Aquarium

Year 11 took on the challenge of Axe Throwing and archery

HALLOWEEN



As part of our Halloween festivities, students and staff came dress in their best Halloween costumes. I'm sure you will agree they all look incredibly scary. The learners truly outdid themselves, transforming ordinary pumpkins into works of art.

The pumpkins were proudly displayed around the school, adding to the festive atmosphere and bringing a touch of Halloween magic to the entire school community.

It was a wonderful way for students to engage in some fun and artistic expression as part of the Halloween celebrations.

Christmas Challenge:

Groups were set with the task of building the tallest free-standing tree structure using only spaghetti sticks and marshmallows

This created a lot of excitement and was designed to promote teamwork, planning, problem solving and creativity.

Congratulations to Business option group with the tallest tree structure standing well over a meter tall with a spaghetti and marshmallow star on the top!!!



WINNER



We had a wonderful time celebrating Christmas Jumper Day in aid of Save the Children. The school was filled with bright colours, festive knits, and plenty of sparkle, instantly putting everyone in the Christmas spirit. It was lovely to see both staff and learners embracing the fun and spreading cheer throughout the day. Thank you to everyone for your fantastic efforts and generous support—it truly made the celebration feel extra special.

FESTIVE FUN

This festive season has been full of joy and creativity at our school, with a series of memorable events and displays celebrating both the holiday spirit and the artistic achievements of our students.

Maple Class have been embracing the festive season by creating Christmas crafts using natural materials found around the gardens. From rustic decorations to imaginative seasonal creations, their creativity has been shining throughout each session.

In the spirit of the season, students took part in an afternoon of Christmas decorating, turning the school into a winter wonderland.

As the year draws to a close, these events have been a beautiful reminder of the joy and talent that our school community has to offer.



Christmas Dinner

The school's annual Christmas Dinner Day was a heart-warming occasion where both staff and students came together to celebrate the festive season.

This special event allowed everyone to enjoy a delicious, traditional Christmas meal, fostering a sense of community and unity within the school.



Students and teachers sat together at shared tables, as everyone enjoyed a meal of turkey, stuffing, roast vegetables, and all the classic Christmas trimmings, followed by a delicious dessert.

For many, this event offered a break from routine and a chance to bond with colleagues and classmates. The Christmas Dinner Day not only celebrated the festive season but also strengthened the sense of school spirit.

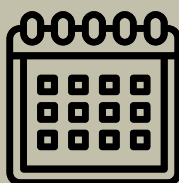
It was a wonderful way to end the term on a high note, leaving everyone feeling festive and appreciative of the strong community they are part of.

CHRISTMAS

School closes - Friday 19th December 2025

School re-opens- Tuesday 6th January 2026

Dates for your Diary



Spring

School closes for Spring half term on Friday 13th February 2026

School re-opens- Monday 23rd February 2026



Holiday and Activities Food Programme

Children and young people aged four to 16 who are eligible for benefits related free school meals can access a range of fun free activities throughout the year.

Funded by the Department of Education, Salford's Holiday Activity and Food programme is a package of support for children and young people on benefits related free school meals. The programme provides free access to multiple activities and food during Easter, summer and winter.

Whether its arts and crafts, dance, sports or drama, Salford's #HAF2024 programme has something for everyone! A wide range of organisations have come together to deliver a range of activities across Salford allowing children and young people to access age-appropriate sessions in their local community.

For more information please visit: <https://www.salford.gov.uk/children-and-families/school-holiday-activities/holiday-activities-and-food-programme/>

Parent survey results

Dear Parents and Carers,

Thank you to everyone who took the time to complete our recent parent survey following the Progress Review Afternoon. We are very grateful for your feedback and are pleased to share a summary of what you told us.

We are delighted that responses were overwhelmingly positive. Parents told us that they feel the school meets their child's individual needs well, communicates effectively, and provides a safe and supportive environment. Many of you highlighted how approachable staff are and how confident you feel raising questions or concerns.

We were particularly pleased to see strong feedback around:

- children feeling safe and supported,
- the quality of emotional and behavioural support,
- the suitability and engagement of the curriculum, and
- the strong partnership between home and school.

Most parents shared that they had no suggestions for improvement, which is very encouraging. One comment reminded us of the importance of preparing some children carefully for new experiences or changes, and this is something we will continue to consider when planning learning activities.

Your feedback helps us reflect, improve and celebrate what we do well. Thank you for continuing to work in partnership with us to support your child's progress and wellbeing.

If you would like to discuss your child's progress further, please do not hesitate to contact the school.

With kind regards,

Joanne McQueen
Head of School
Arbour Academy

This term saw us welcome some new staff recruits to The Arbour Family...

A big Hello and welcome to:

- Laura Stock- Family Support Worker
- Natalie Cookson - Lead Admin

Welcome to the Team!

READ ALL ABOUT IT!

You can keep up to date on all the latest school news by following us on X @ArbourAcademy or by checking out our school website: www.arbouracademy.uk

Pastoral Care at Arbour Academy

At Arbour Academy, supporting our learners' emotional well-being is at the heart of everything we do. We understand that many of our students have experienced trauma, and we are committed to helping them develop the emotional awareness and coping strategies they need to thrive.

Our dedicated pastoral team provides continuous support, ensuring that students feel safe, understood, and empowered. From induction through to daily support, we take a proactive approach to emotional well-being.

Meet the Pastoral team...



Arbour Pastoral Team

Jade Howard, Allie Bourne and Laura Stock

COPING AT CHRISTMAS

The Added Pressures of Christmas can be Tough, but it's Important to know there's always Someone you can Talk to...



Call 111 & select option 2 to speak to the NHS Mental Health Crisis Response Service 24/7

[Nhs.uk/mental-health](https://www.nhs.uk/mental-health)



Under 35s can Call 0800 068 4141, Text: 88247 or Email: pat@papyrus-uk.org

[Papyrus-uk.org](https://www.papyrus-uk.org)



Call 116 123 to talk to Samaritans, or email: jo@samaritans.org for a reply within 24 hours

[Samaritans.org](https://www.samaritans.org)



Call MIND's Mental Health Helpline 9am to 6pm, Monday to Friday on 0300 102 1234

[Mind.org.uk](https://www.mind.org.uk)



Text "SHOUT" to 85258 to contact the Shout Crisis Text Line, or text "YM" if you're under 19

[Giveusashout.org](https://www.giveusashout.org)



Mental Health Forum & Chat for Men from 5pm - midnight every day. Call or Whatsapp 0800 585858

[Thecalmline.net](https://www.thecalmline.net)

[ChristmasCountdown.uk](https://www.ChristmasCountdown.uk)

Support over Christmas

At Arbour Academy, we are looking at ways we can help our parents with situations which may arise over the Christmas holidays. If there are any concerns around a child, they must be reported to The Bridge Partnership on 0161 603 4500.

All referrals and requests for support must be completed on the online referral form. The Bridge Partnership is available Monday to Friday 8.30am - 4.30pm.

If you need to speak to someone outside these times, please contact the Emergency Duty Team (EDT) on 0161 794 8888.

If a child is in immediate danger of being harmed or is home alone, call the police on 999.

If you are worried about an adult - Report abuse or neglect by telephone on 0161 206 0604 and for further information visit <https://www.salford.gov.uk/adult-safeguarding>